

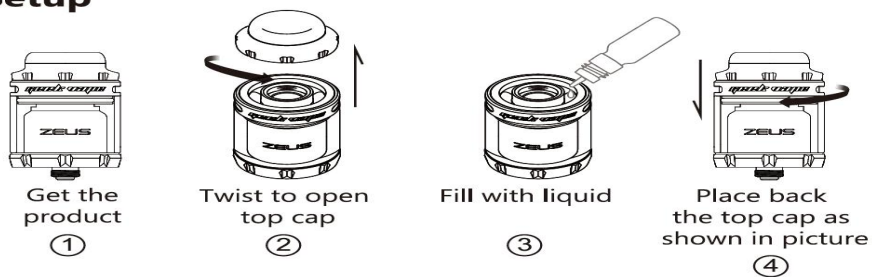
GEEKVAPE Technology Co., LTD	File No.	GV/WI-E-2000 2
	Page	1/2
<b>e-Cigarette Opening and Refilling Description</b>	Version	A0
	Issue Date	2019-03-18

Change Status			
Issue Date	Version	Summary	Remark
2018-03-18	A0	Document Issue	
Approved By		Checked By	Prepared By
Copy File Department Distribution Detail			
Quality Dept.		SD	
Pur. Dept.			
Engineering Dept.			
MD			
This document is stamped with the issuing and issuing date.			

GEEKVAPE Technology Co., LTD	File No.	GV/WI-E-2000 2
	Page	2/2
<b>e-Cigarette Opening and Refilling Description</b>	Version	A0
	Issue Date	2019-03-18

- 1、Purchase: In order to declare the TPD demand
- 2、Function: The document is prepared by the market department.
- 3、Detail Content :
  - a) Opening System: Refill the e-liquid from the top of atomizer (The top cap with atomizer head).
  - b) Operation instructions: Screw off the top cap and Refill the e-liquid from the hole on the top. The e-liquid capacity is **2.0 ml**.
  - c) Note: Please don't overfill when reassemble.
  - d) Filling Structure

#### Setup



- e) Application of Product: **GEEKVAPE ZEUS X MESH RTA 2ML**.